

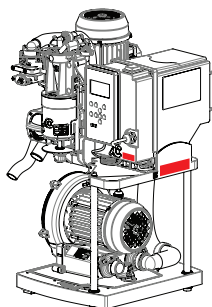
SERIAL NUMBER & GEN CODE GUIDE

LOCATION OF THE DATA PLATE AND GEN CODE

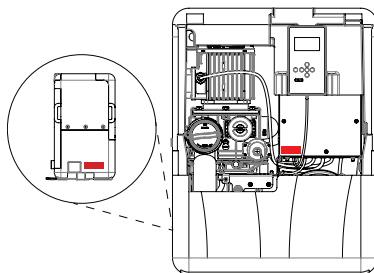


DATA PLATE AND GEN CODE (SMART SUCTION ONLY) LOCATION

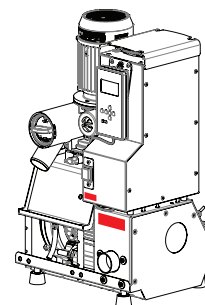
- 1 MICRO SMART**
Data plate on side of unit.
Gen code 8-digit hexadecimal number found on the front of the control panel.



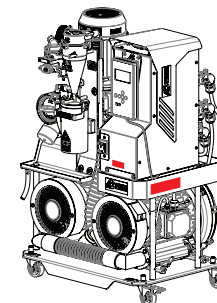
- 2 MICRO & TURBO SMART CUBE**
Data plate on outside of acoustic housing.
Gen code 8-digit hexadecimal number found on the front of the control panel.



- 3 TURBO SMART**
Data plate above suction outlet.
Gen code 8-digit hexadecimal number found on the front of the control panel.

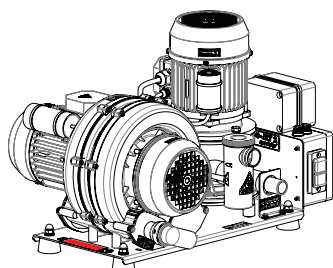


- 4 TURBO SMART HP**
Data plate on side of unit.
Gen code 8-digit hexadecimal number found on the front of the control panel.

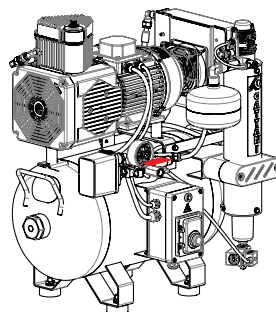


DATA PLATE LOCATION

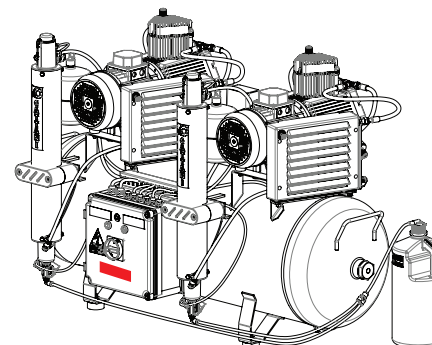
- 5 TURBO JET**



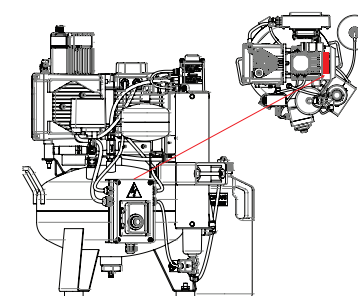
- 6 AC & CADCAM COMPRESSORS**



- 7 LARGE PLANT COMPRESSORS**
Data plate on control panel (top or bottom - model dependent). Ensure you use the "compressor" data plate and not the "control panel" data plate.



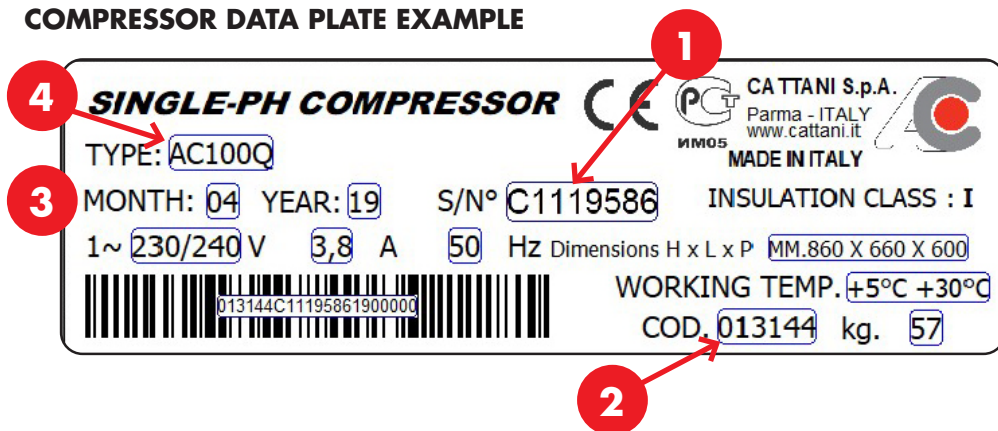
- 8 K SERIES COMPRESSORS**



SERIAL NUMBER & GEN CODE GUIDE

HOW TO READ THE DATA PLATE

COMPRESSOR DATA PLATE EXAMPLE



- 1** S/N° SERIAL NUMBER LOCATION
- 2** ITEM NUMBER (COD)
- 3** DATE OF MANUFACTURE (MONTH & YEAR)
- 4** PRODUCT TYPE

SUCTION DATA PLATE EXAMPLE

